

CD34 Monoclonal Antibody



MAC00485

Product Information

Size:

50ul

Reactivity:

Human

Source:

Mouse

Isotype:

IgG1, Kappa

Applications:

ELISA, IHC

Recommended dilutions:

IHC:1:20-1:200

Protein Background:

Possible adhesion molecule with a role in early hematopoiesis by mediating the attachment of stem cells to the bone marrow extracellular matrix or directly to stromal cells. Could act as a scaffold for the attachment of lineage specific glycans, allowing stem cells to bind to lectins expressed by stromal cells or other marrow components. Presents carbohydrate ligands to selectins.

Gene ID:

CD34

Uniprot

P28906

Synonyms:

Hematopoietic progenitor cell antigen CD34 (CD antigen CD34), CD34

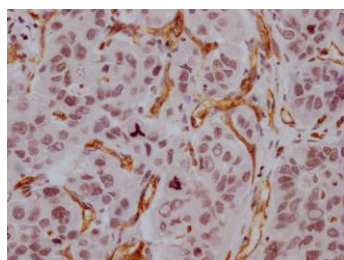
Immunogen:

Synthesized peptide derived from human CD34

Storage:

Liquid in PBS containing 50% glycerol, 0.5% BSA and 0.02% sodium azide.

Product Images



IHC image of MACO0485 diluted at 1:100 and staining in paraffin-embedded human liver cancer performed on a Leica Bond™ system. After dewaxing and hydration, antigen retrieval was mediated by high pressure in a citrate buffer (pH 6.0). Section was blocked with 10% normal goat serum 30min at RT. Then primary antibody (1% BSA) was incubated at 4°C overnight. The primary is detected by a Goat anti-mouse IgG polymer labeled by HRP and visualized using 0.05% DAB.