

# KRT5/KRT6A Monoclonal Antibody



MACO0502

---

## Product Information

**Size:**

50ul

**Reactivity:**

Human

**Source:**

Mouse

**Isotype:**

IgG1, Kappa

**Applications:**

ELISA, IHC

**Recommended dilutions:**

IHC:1:20-1:200

**Protein Background:**

cytoplasm, cytosol, extracellular exosome, intermediate filament, keratin filament, membrane, nucleus, scaffold protein binding, structural constituent of cytoskeleton, cornification

**Gene ID:**

KRT5/KRT6A

**Uniprot**

P13647/P02538

**Synonyms:**

Keratin, type II cytoskeletal 5 (58 kDa cytokeratin) (Cytokeratin-5) (CK-5) (Keratin-5) (K5) (Type-II keratin Kb5), KRT5

**Immunogen:**

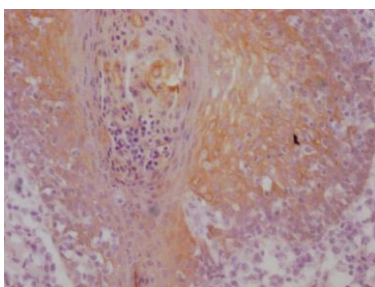
Synthesized peptide derived from human Cytokeratin 5/6

**Storage:**

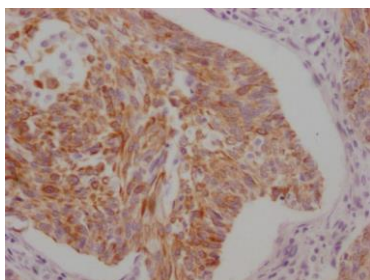
Liquid in PBS containing 50% glycerol, 0.5% BSA and 0.02% sodium azide.

## Product Images

---



IHC image of MACO0502 diluted at 1:100 and staining in paraffin-embedded human tonsil tissue performed on a Leica Bond™ system. After dewaxing and hydration, antigen retrieval was mediated by high pressure in a citrate buffer (pH 6.0). Section was blocked with 10% normal goat serum 30min at RT. Then primary antibody (1% BSA) was incubated at 4°C overnight. The primary is detected by a Goat anti-mouse IgG polymer labeled by HRP and visualized using 0.05% DAB.



IHC image of MACO0502 diluted at 1:100 and staining in paraffin-embedded human cervical cancer performed on a Leica Bond™ system. After dewaxing and hydration, antigen retrieval was mediated by high pressure in a citrate buffer (pH 6.0). Section was blocked with 10% normal goat serum 30min at RT. Then primary antibody (1% BSA) was incubated at 4°C overnight. The primary is detected by a Goat anti-mouse IgG polymer labeled by HRP and visualized using 0.05% DAB.