

KRT14/KRT16/KRT5/KRT6A/KRT8 Monoclonal Antibody

MACO0506



Product Information

Size:

50ul

Reactivity:

Human

Source:

Mouse

Isotype:

IgG2b, Kappa

Applications:

ELISA, IHC

Recommended dilutions:

IHC:1:20-1:200

Protein Background:

Cytokeratin pan is part of a subfamily of intermediate filament proteins that are characterized by remarkable biochemical diversity, and represented in human epithelial tissues by at least 20 different polypeptides. Cytokeratins range in molecular weight between 40 kDa- 68 kDa, and an isoelectric pH between 4. 9-7. 8. The individual human cytokeratins are numbered 1 to 20. The various epithelia in the human body usually express cytokeratins which are not only characteristic of the type of epithelium, but also related to the degree of maturation or differentiation within an epithelium. Cytokeratin subtype expression patterns are used to an increasing extent in the distinction of different types of epithelial malignancies.

Gene ID:

KRT14/KRT16/KRT5/KRT6A/KRT8

Uniprot

P02533/P08779/P13647/P02538/P05787

Synonyms:

CARD2; CK-4; CK-6C; CK-6E; CK-8; CK14; CK16; CK4; CK5; CK6A; CK6C; CK6D; CK8; CYK4; CYK8; DDD; DDD1;

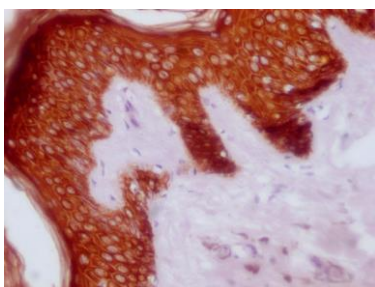
Immunogen:

Synthesized peptide derived from human Cytokeratin Pan

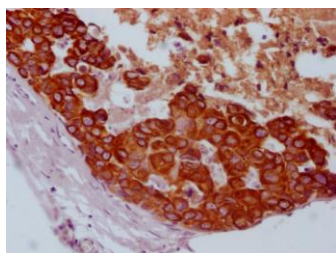
Storage:

Liquid in PBS containing 50% glycerol, 0.5% BSA and 0.02% sodium azide.

Product Images



IHC image of MACO0506 diluted at 1:100 and staining in paraffin-embedded human skin tissue performed on a Leica Bond™ system. After dewaxing and hydration, antigen retrieval was mediated by high pressure in a citrate buffer (pH 6.0). Section was blocked with 10% normal goat serum 30min at RT. Then primary antibody (1% BSA) was incubated at 4°C overnight. The primary is detected by a Goat anti-mouse IgG polymer labeled by HRP and visualized using 0.05% DAB.



IHC image of MACO0506 diluted at 1:100 and staining in paraffin-embedded human breast cancer performed on a Leica Bond™ system. After dewaxing and hydration, antigen retrieval was mediated by high pressure in a citrate buffer (pH 6.0). Section was blocked with 10% normal goat serum 30min at RT. Then primary antibody (1% BSA) was incubated at 4°C overnight. The primary is detected by a Goat anti-mouse IgG polymer labeled by HRP and visualized using 0.05% DAB.