

Hemoglobin Monoclonal Antibody



MACO0533

Product Information

Size:

50ug

Reactivity:

Human

Source:

Mouse

Isotype:

IgG1

Applications:

ELISA, IHC

Recommended dilutions:

IHC:1:50-1:500

Protein Background:

Hemoglobin is involved in oxygen transport from the lung to the various peripheral tissues. The alpha (HBA) and beta (HBB) loci determine the structure of the 2 types of polypeptide chains in adult Hemoglobin. The normal adult Hemoglobin tetramer consists of two alpha chains and two beta chains. Mutant beta globin causes sickle cell anemia. Absence of beta chain causes beta zero thalassemia. Reduced amounts of detectable beta globin causes beta plus thalassemia.

Gene ID:

Hemoglobin

Uniprot

Synonyms:

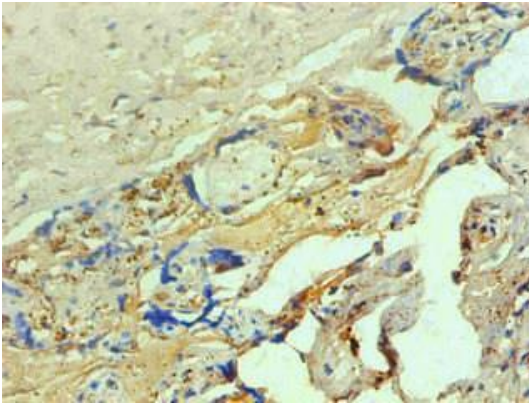
Immunogen:

Natural Human Hemoglobin

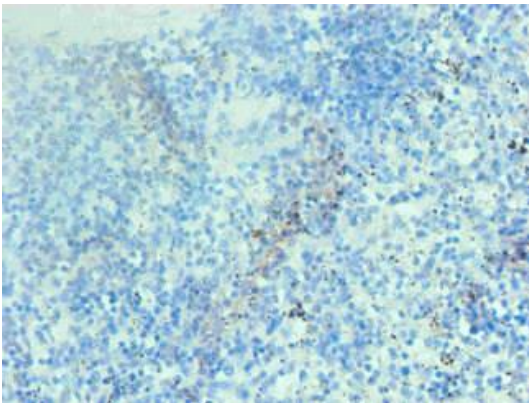
Storage:

Preservative: 0.03% Proclin 300. Constituents: 50% Glycerol, 0.01M PBS, PH 7.4

Product Images



Immunohistochemical of paraffin-embedded human placenta tissue using MACO0533 at dilution of 1:200



Immunohistochemical of paraffin-embedded human spleen tissue using MACO0533 at dilution of 1:200