

# RRM1 Monoclonal Antibody



MACO0566

---

## Product Information

**Size:**

50ug

**Reactivity:**

Human

**Source:**

Mouse

**Isotype:**

IgG

**Applications:**

ELISA, IHC

**Recommended dilutions:**

IHC:1:50-1:500

**Protein Background:**

This gene encodes one of two non-identical subunits that constitute ribonucleoside-diphosphate reductase, an enzyme essential for the production of deoxyribonucleotides prior to DNA synthesis in S phase of dividing cells. It is one of several genes located in the imprinted gene domain of 11p15. 5, an important tumor-suppressor gene region. Alterations in this region have been associated with the Beckwith-Wiedemann syndrome, Wilms tumor, rhabdomyosarcoma, adrenocortical carcinoma, and lung, ovarian, and breast cancer. This gene may play a role in malignancies and disease that involve this region.

**Gene ID:**

RRM1

**Uniprot**

P23921

**Synonyms:**

Ribonucleotide Reductase M1, RRM1, RR1

**Immunogen:**

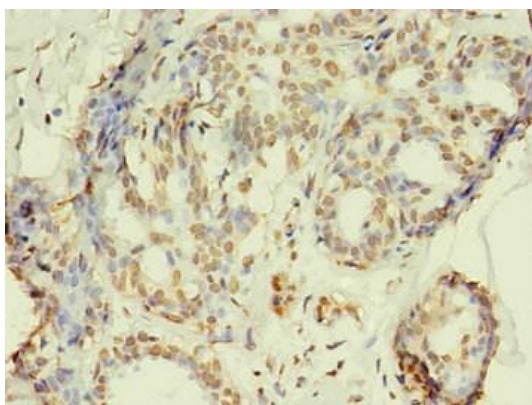
Recombinant Human RRM1 Protein

**Storage:**

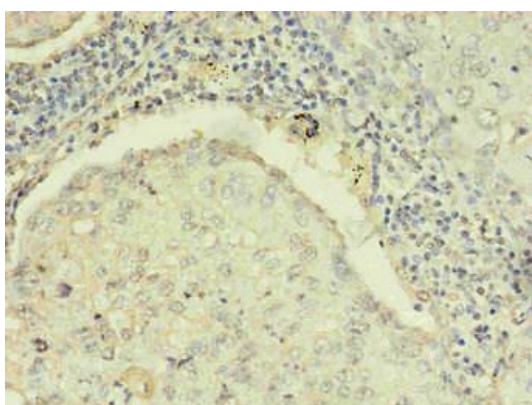
Preservative: 0.03% Proclin 300. Constituents: 50% Glycerol, 0.01M PBS, PH 7.4

## Product Images

---



Immunohistochemistry of paraffin-embedded human breast cancer using MACO0566 in 30ug/ml dilute concentrations.



Immunohistochemistry of paraffin-embedded human lung cancer using MACO0566 in 30ug/ml dilute concentrations.