

IGFBP1 Monoclonal Antibody



MACO0574

Product Information

Size:

50ug

Reactivity:

Human, Mouse

Source:

Mouse

Isotype:

IgG1

Applications:

ELISA, WB

Recommended dilutions:

WB:1:500-1:5000

Protein Background:

This gene is a member of the Insulin-like growth factor-binding protein (IGFBP) family and encodes a protein with an IGFBP domain and a type-I thyroglobulin domain. The protein binds both insulin-like growth factors (IGFs) I and II and circulates in the plasma. Binding of this protein prolongs the half-life of the IGFs and alters their interaction with cell surface receptors. Alternate transcriptional splice variants, encoding different isoforms, have been characterized.

Gene ID:

IGFBP1

Uniprot

P08833

Synonyms:

IGFBP1, Insulin-like growth factor-binding protein 1, IGF-binding protein 1

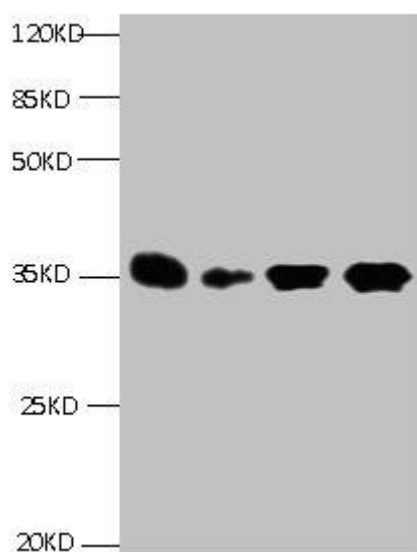
Immunogen:

Recombinant Human IGFBP1 Protein

Storage:

Preservative: 15mmol/L NaN₃. Constituents: 0.1mol/L NaCl

Product Images



All lanes: Mouse anti- Human Insulin-like growth factor-binding protein
1 monoclonal antibody at 1ug/ml
Lane 1: Pyrolysis liquid human placental tissue 7.5ug/ml
Lane 2: Pyrolysis liquid human placental tissue 3.25ug/ml
Lane 3: IGFBP1 transfected SF9 cell lysate
Lane 4: human amniotic fluid
Secondary Goat polyclonal to Mouse IgG at 1/5000 dilution
Predicted band size : 28kd
Observed band size : 35kd