

MACO0619

Product Information

Size:

50ul

Reactivity:

Human, Rat, Mouse, Rabbit

Source:

Mouse

Isotype:

IgG1

Applications:

ELISA, WB, IHC, IF, FC, IP

Recommended dilutions:

WB:1:4000-1:256000, IHC:1:200-1:500,
IF:1:150-1:300, FC:1:50-1:200, IP:1µl-4µl

Protein Background:

Glycolytic enzyme that catalyzes the transfer of a phosphoryl group from phosphoenolpyruvate (PEP) to ADP, generating ATP. Stimulates POU5F1-mediated transcriptional activation. Plays a general role in caspase independent cell death of tumor cells. The ratio between the highly active tetrameric form and nearly inactive dimeric form determines whether glucose carbons are channeled to biosynthetic processes or used for glycolytic ATP production. The transition between the 2 forms contributes to the control of glycolysis and is important for tumor cell proliferation and survival.

Gene ID:

PKM

Uniprot

P14618

Synonyms:

CTHBP antibody; Cytosolic thyroid hormone-binding protein antibody; KPYM_HUMAN antibody; OIP-3 antibody;

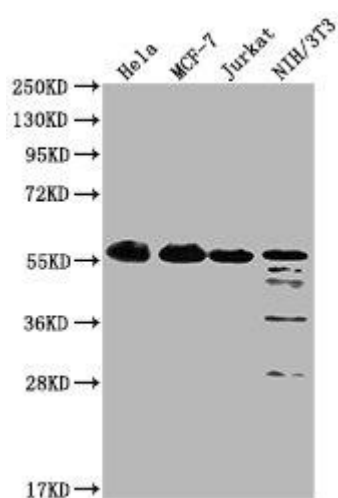
Immunogen:

Recombinant Human Pyruvate kinase PKM protein (2-531AA)

Storage:

Preservative: 0.03% Proclin 300. Constituents: 50% Glycerol, 0.01M PBS, PH 7.4

Product Images



Western Blot

Positive WB detected in: HeLa whole cell lysate, MCF-7 whole cell lysate, Jurkat whole cell lysate, NIH/3T3 whole cell lysate

All lanes: PKM antibody at 1:1000

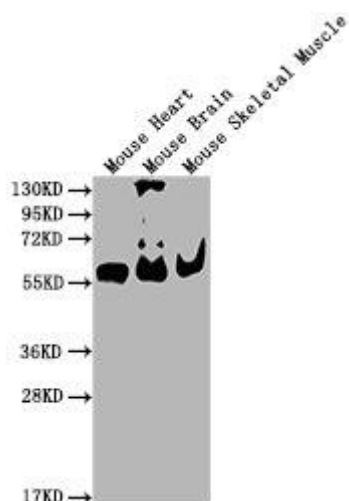
Secondary

Goat polyclonal to Mouse IgG at 1/10000 dilution

Predicted band size: 58 kDa

Observed band size: 58 KDa

Exposure time: 1min



Western Blot

Positive WB detected in: Mouse Heart tissue, Mouse Brain tissue, Mouse Skeletal Muscle tissue

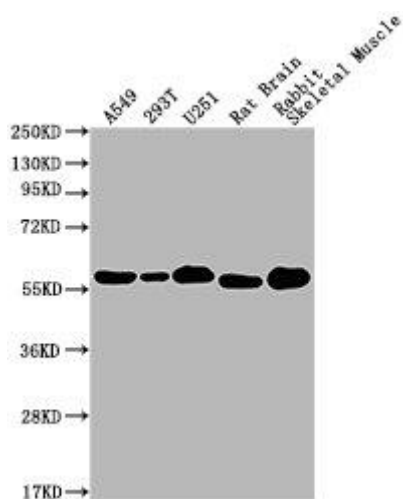
All lanes: PKM antibody at 1:4000

Secondary

Goat polyclonal to Mouse IgG at 1/10000 dilution

Predicted band size: 55-60 kDa

Observed band size: 55-60 kDa



Western Blot

Positive WB detected in: A549 whole cell lysate, 293T whole cell lysate, U251 whole cell lysate, Rat Brain tissue, Rabbit Skeletal Muscle tissue

All lanes: PKM antibody at 1:1000

Secondary

Goat polyclonal to Mouse IgG at 1/10000 dilution

Predicted band size: 58 kDa

Observed band size: 58 KDa

Exposure time: 1min