

MACO0620

---

## Product Information

**Size:**

50ul

**Reactivity:**

Human, Mouse

**Source:**

Mouse

**Isotype:**

IgG1

**Applications:**

ELISA, WB, IHC, IF, FC, IP

**Recommended dilutions:**

WB:1:4000-1:512000, IHC:1:500-1:1000,  
IF:1:150-1:300, FC:1:50-1:100, IP:1µl-4µl

**Protein Background:**

Glycolytic enzyme that catalyzes the transfer of a phosphoryl group from phosphoenolpyruvate (PEP) to ADP, generating ATP. Stimulates POU5F1-mediated transcriptional activation. Plays a general role in caspase independent cell death of tumor cells. The ratio between the highly active tetrameric form and nearly inactive dimeric form determines whether glucose carbons are channeled to biosynthetic processes or used for glycolytic ATP production. The transition between the 2 forms contributes to the control of glycolysis and is important for tumor cell proliferation and survival.

**Gene ID:**

PKM

**Uniprot**

P14618

**Synonyms:**

CTHBP antibody; Cytosolic thyroid hormone-binding protein antibody; KPYM\_HUMAN antibody; OIP-3 antibody;

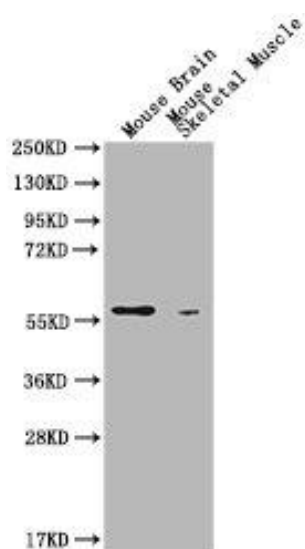
**Immunogen:**

Recombinant Human Pyruvate kinase PKM protein (2-531AA)

**Storage:**

Preservative: 0.03% Proclin 300. Constituents: 50% Glycerol, 0.01M PBS, PH 7.4

## Product Images



### Western Blot

Positive WB detected in: Mouse Brain tissue, Mouse Skeletal Muscle tissue

All lanes: PKM antibody at 1:1000

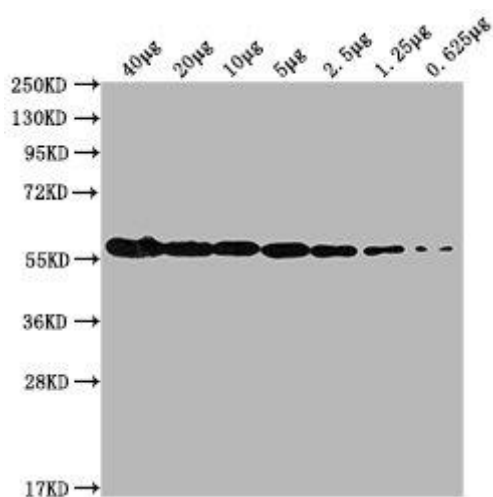
Secondary

Goat polyclonal to Mouse IgG at 1/10000 dilution

Predicted band size: 58 kDa

Observed band size: 58 KDa

Exposure time: 5min



### Western Blot

Positive WB detected in: MCF-7 whole cell lysate at 40µg, 20µg, 10µg, 5µg, 2.5µg, 1.25µg, 0.625µg

All lanes: PKM antibody at 1:1000

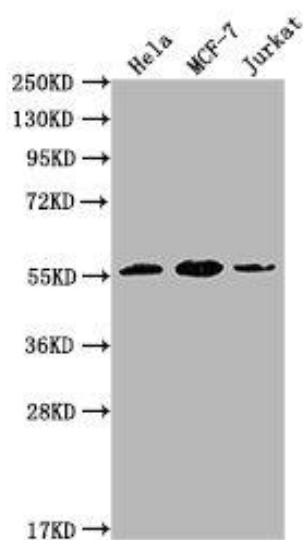
Secondary

Goat polyclonal to Mouse IgG at 1/10000 dilution

Predicted band size: 58 kDa

Observed band size: 58 KDa

Exposure time: 5min



### Western Blot

Positive WB detected in: HeLa whole cell lysate, MCF-7 whole cell lysate, Jurkat whole cell lysate

All lanes: PKM antibody at 1:1000

Secondary

Goat polyclonal to Mouse IgG at 1/10000 dilution

Predicted band size: 58 kDa

Observed band size: 58 KDa

Exposure time: 1min