

# Cleaved-C1R (I464) Antibody



PACO00007

---

## Product Information

**Size:**

50ug

**Reactivity:**

Human

**Source:**

Rabbit

**Isotype:**

IgG

**Applications:**

ELISA, WB

**Recommended dilutions:**

WB:1:500-1:2000

**Protein Background:**

**Gene ID:**

C1R

**Uniprot**

P00736

**Synonyms:**

C1R; Complement C1r subcomponent; Complement component 1 subcomponent r

**Immunogen:**

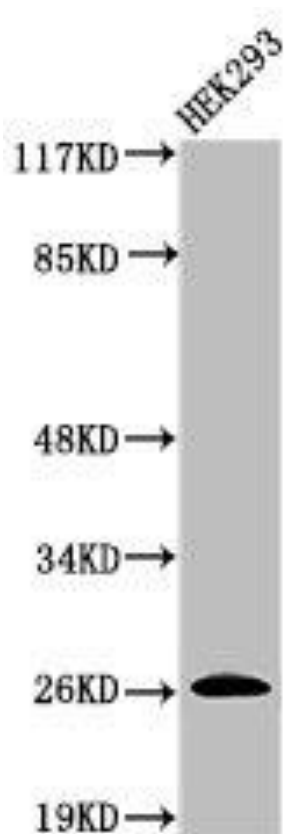
Synthesized peptide derived from the Internal region of human C1r LC.

**Storage:**

Liquid in PBS containing 50% glycerol, 0.5% BSA and 0.02% sodium azide.

## Product Images

---



Western Blot analysis of 293 cells using Cleaved-C1r LC (I464) Polyclonal Antibody.