

# Cleaved-CASP7 (D198) Antibody



PACO00015

---

## Product Information

**Size:**

50ug

**Reactivity:**

Human, Mouse

**Source:**

Rabbit

**Isotype:**

IgG

**Applications:**

ELISA, WB

**Recommended dilutions:**

WB:1:500-1:2000

**Protein Background:****Gene ID:**

CASP7

**Uniprot**

P55210

**Synonyms:**

CASP7; MCH3; Caspase-7; CASP-7; Apoptotic protease Mch-3; CMH-1; ICE-like apoptotic protease 3; ICE-LAP3

**Immunogen:**

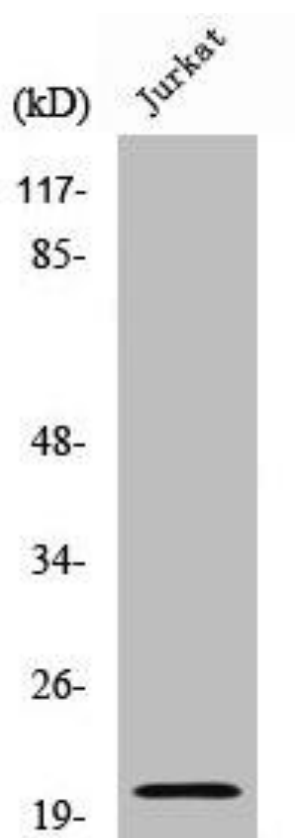
Synthesized peptide derived from the Internal region of human Caspase-7 p20.

**Storage:**

Liquid in PBS containing 50% glycerol, 0.5% BSA and 0.02% sodium azide.

## Product Images

---



Western Blot analysis of Jurkat cells using Cleaved-Caspase-7 p20 (D198) Polyclonal Antibody.