

# Cleaved-CTSC (R394) Antibody



PACO00017

---

## Product Information

**Size:**

50ug

**Reactivity:**

Human

**Source:**

Rabbit

**Isotype:**

IgG

**Applications:**

ELISA, WB

**Recommended dilutions:**

WB:1:500-1:2000

**Protein Background:**

**Gene ID:**

CTSC

**Uniprot**

P53634

**Synonyms:**

CTSC; CPPI; Dipeptidyl peptidase 1; Cathepsin C; Cathepsin J; Dipeptidyl peptidase I; DPP-I; DPPI; Dipeptidyl transferase

**Immunogen:**

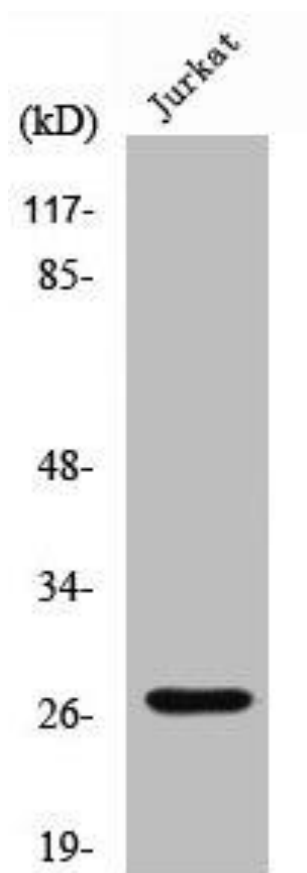
Synthesized peptide derived from the C-terminal region of human Cathepsin C HC.

**Storage:**

Liquid in PBS containing 50% glycerol, 0.5% BSA and 0.02% sodium azide.

## Product Images

---



Western Blot analysis of Jurkat cells using Cleaved-Cathepsin C HC (R394) Polyclonal Antibody.