

Cleaved-CTSL (T288) Antibody



PACO00021

Product Information

Size:

50ug

Reactivity:

Human

Source:

Rabbit

Isotype:

IgG

Applications:

ELISA, WB

Recommended dilutions:

WB:1:500-1:2000

Protein Background:

Gene ID:

CTSL

Uniprot

P07711

Synonyms:

CTSL1; CTSL; Cathepsin L1; Major excreted protein; MEP

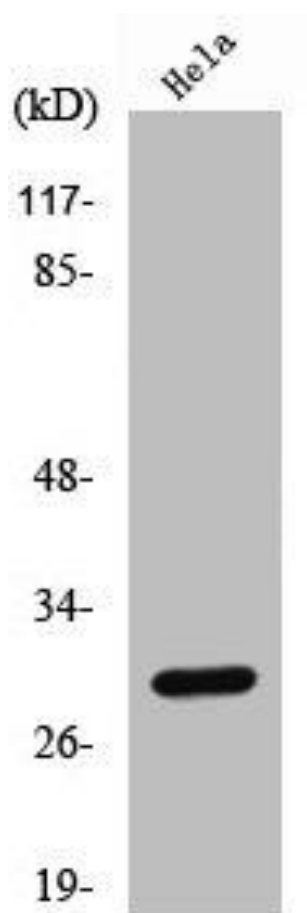
Immunogen:

Synthesized peptide derived from the C-terminal region of human Cathepsin L1 HC.

Storage:

Liquid in PBS containing 50% glycerol, 0.5% BSA and 0.02% sodium azide.

Product Images



Western Blot analysis of HeLa cells using Cleaved-Cathepsin L1 HC (T288) Polyclonal Antibody.