

Cleaved-CTSG (I21) Antibody



PACO00023

Product Information

Size:

50ug

Reactivity:

Human, Mouse, Rat

Source:

Rabbit

Isotype:

IgG

Applications:

ELISA, WB

Recommended dilutions:

WB:1:500-1:2000

Protein Background:**Gene ID:**

CTSG

Uniprot

P08311

Synonyms:

CTSG; Cathepsin G; CG

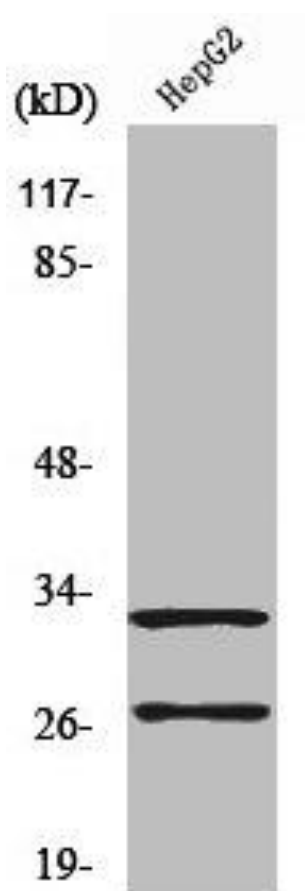
Immunogen:

Synthesized peptide derived from the N-terminal region of human Cathepsin G.

Storage:

Liquid in PBS containing 50% glycerol, 0.5% BSA and 0.02% sodium azide.

Product Images



Western Blot analysis of A549 cells using Cleaved-Cathepsin G (I21) Polyclonal Antibody.