

# Cleaved-EFNA2 (N188) Antibody



PACO00028

---

## Product Information

**Size:**

50ug

**Reactivity:**

Human, Mouse

**Source:**

Rabbit

**Isotype:**

IgG

**Applications:**

ELISA, WB

**Recommended dilutions:**

WB:1:500-1:2000

**Protein Background:**

**Gene ID:**

EFNA2

**Uniprot**

O43921

**Synonyms:**

EFNA2; EPLG6; LERK6; Ephrin-A2; EPH-related receptor tyrosine kinase ligand 6; LERK-6; HEK7 ligand; HEK7-L

**Immunogen:**

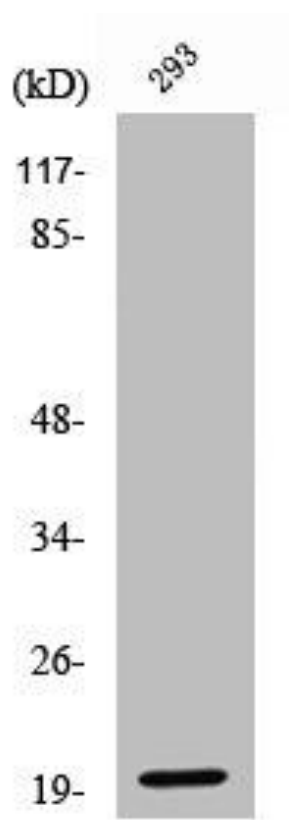
Synthesized peptide derived from the C-terminal region of human Ephrin-A2.

**Storage:**

Liquid in PBS containing 50% glycerol, 0.5% BSA and 0.02% sodium azide.

## Product Images

---



Western Blot analysis of 293 cells using Cleaved-Ephrin-A2 (N188) Polyclonal Antibody.