

Cleaved-KLK11 (I54) Antibody



PACO00030

Product Information

Size:

50ug

Reactivity:

Human

Source:

Rabbit

Isotype:

IgG

Applications:

ELISA, WB

Recommended dilutions:

WB:1:500-1:2000

Protein Background:

Gene ID:

KLK11

Uniprot

Q9UBX7

Synonyms:

KLK11; PRSS20; TLSP; Kallikrein-11; hK11; Hippostasin; Serine protease 20; Trypsin-like protease

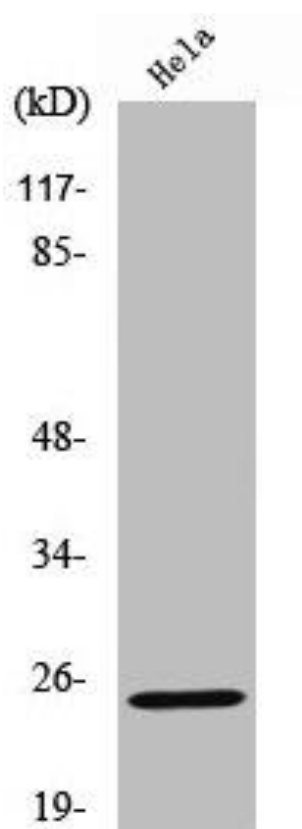
Immunogen:

Synthesized peptide derived from the Internal region of human KLK11.

Storage:

Liquid in PBS containing 50% glycerol, 0.5% BSA and 0.02% sodium azide.

Product Images



Western Blot analysis of HeLa cells using Cleaved-KLK11 (I54) Polyclonal Antibody.