

# Cleaved-MMP17 (Q129) Antibody



PACO00035

---

## Product Information

**Size:**

50ug

**Reactivity:**

Human

**Source:**

Rabbit

**Isotype:**

IgG

**Applications:**

ELISA, WB

**Recommended dilutions:**

WB:1:500-1:2000

**Protein Background:**

**Gene ID:**

MMP17

**Uniprot**

Q9ULZ9

**Synonyms:**

MMP17; MT4MMP; Matrix metalloproteinase-17; MMP-17; Membrane-type matrix metalloproteinase 4; MT-MMP 4; MTMMP4; Membrane-type-4 matrix metalloproteinase; MT4-MMP; MT4MMP

**Immunogen:**

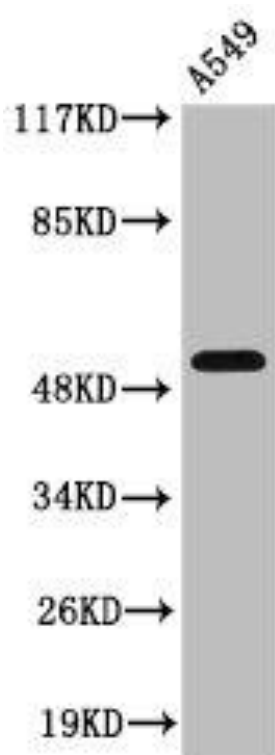
Synthesized peptide derived from the Internal region of human MMP-17.

**Storage:**

Liquid in PBS containing 50% glycerol, 0.5% BSA and 0.02% sodium azide.

## Product Images

---



Western Blot analysis of A549 cells using Cleaved-MMP-17 (Q129) Polyclonal Antibody.