

# Cleaved-F12 (R372) Antibody



PACO00045

---

## Product Information

**Size:**

50ug

**Reactivity:**

Human

**Source:**

Rabbit

**Isotype:**

IgG

**Applications:**

ELISA, WB

**Recommended dilutions:**

WB:1:500-1:2000

**Protein Background:**

**Gene ID:**

F12

**Uniprot**

P00748

**Synonyms:**

F12; Coagulation factor XII; Hageman factor; HAF

**Immunogen:**

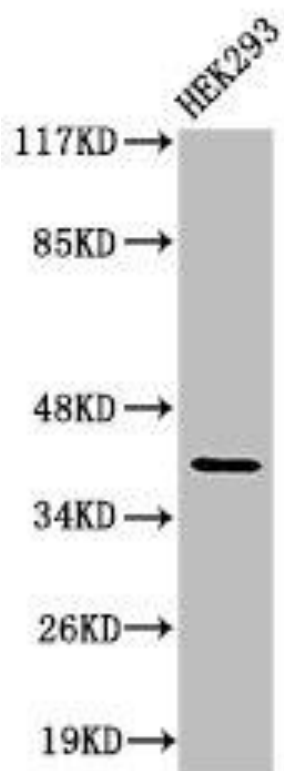
Synthesized peptide derived from the Internal region of human Factor XII HC.

**Storage:**

Liquid in PBS containing 50% glycerol, 0.5% BSA and 0.02% sodium azide.

## Product Images

---



Western Blot analysis of 293 cells using Cleaved-Factor XII HC (R372) Polyclonal Antibody.