

Cleaved-ITGA5 (E895) Antibody



PACO00047

Product Information

Size:

50ug

Reactivity:

Human

Source:

Rabbit

Isotype:

IgG

Applications:

ELISA, WB

Recommended dilutions:

WB:1:500-1:2000

Protein Background:**Gene ID:**

ITGA5

Uniprot

P08648

Synonyms:

ITGA5; FNRA; Integrin alpha-5; CD49 antigen-like family member E; Fibronectin receptor subunit alpha; Integrin alpha-F; VLA-5; CD antigen CD49e

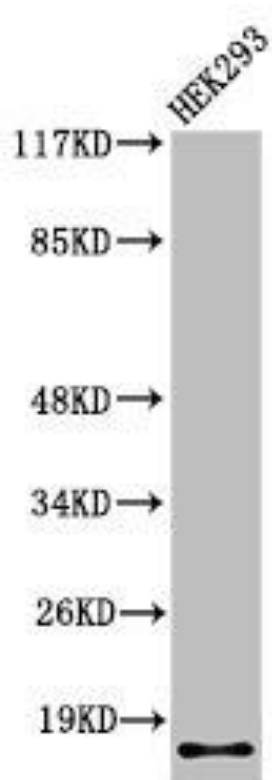
Immunogen:

Synthesized peptide derived from the C-terminal region of human Integrin alpha5 LC.

Storage:

Liquid in PBS containing 50% glycerol, 0.5% BSA and 0.02% sodium azide.

Product Images



Western Blot analysis of 293 cells using Cleaved-Integrin alpha5 LC (E895) Polyclonal Antibody.