

# Mono-Methyl-Histone H3 (K37) Antibody



PACO00061

---

## Product Information

**Size:**

50ug

**Reactivity:**

Human, Mouse, Rat

**Source:**

Rabbit

**Isotype:**

IgG

**Applications:**

ELISA, WB

**Recommended dilutions:**

WB:1:500-1:2000

**Protein Background:****Gene ID:**

HIST1H3A/HIST2H3A/H3F3A/H3F3C

**Uniprot**

P68431/Q71DI3/P84243/Q6NXT2

**Synonyms:**

HIST1H3A; H3FA; HIST1H3B; H3FL; HIST1H3C; H3FC; HIST1H3D; H3FB; HIST1H3E; H3FD; HIST1H3F; H3FI; HIST1H3G; H3FH; HIST1H3H; H3FK; HIST1H3I; H3FF; HIST1H3J; H3FJ; Histone H3.1;

**Immunogen:**

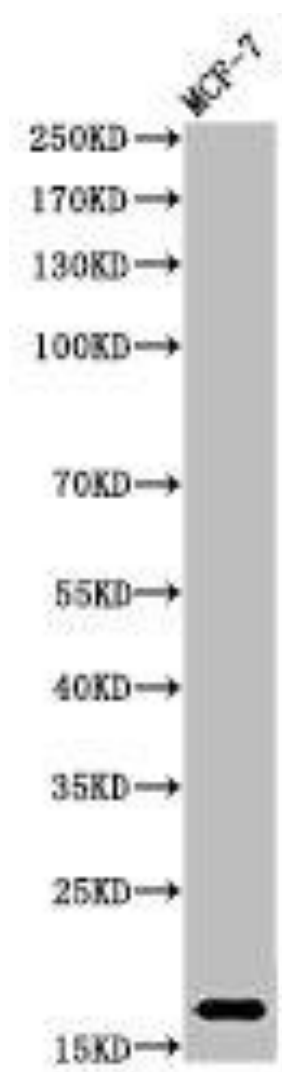
Synthesized peptide derived from human Histone H3 around the mono-methylation site of K37.

**Storage:**

Liquid in PBS containing 50% glycerol, 0.5% BSA and 0.02% sodium azide.

## Product Images

---



Western Blot analysis of MCF-7 cells using Mono-Methyl-Histone H3 (K37) Polyclonal Antibody.