

Di-Methyl-Histone H3 (K10) Antibody



PACO00067

Product Information

Size:

50ug

Reactivity:

Human, Mouse, Rat

Source:

Rabbit

Isotype:

IgG

Applications:

ELISA, WB

Recommended dilutions:

WB:1:500-1:2000

Protein Background:**Gene ID:**

HIST1H3A/HIST2H3A/H3F3A/H3F3C

Uniprot

P68431/Q71DI3/P84243/Q6NXT2

Synonyms:

HIST1H3A; H3FA; HIST1H3B; H3FL; HIST1H3C; H3FC; HIST1H3D; H3FB; HIST1H3E; H3FD; HIST1H3F; H3FI; HIST1H3G; H3FH; HIST1H3H; H3FK; HIST1H3I; H3FF; HIST1H3J; H3FJ; Histone H3.1; Histone H3/a; Histone H3/b; Histone H3/c; Histone H3/d; Histone H3/f; Histone H3/

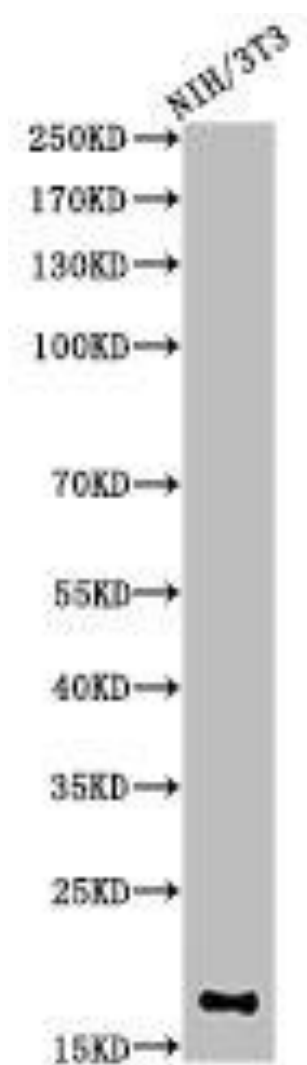
Immunogen:

Synthesized peptide derived from the N-terminal region of human Histone H3 around the di-methylation site of K10.

Storage:

Liquid in PBS containing 50% glycerol, 0.5% BSA and 0.02% sodium azide.

Product Images



Western Blot analysis of 3T3 cells using Di-Methyl-Histone H3 (K10) Polyclonal Antibody.