

# Acetyl-CREBBP (K1535) Antibody



PACO00068

---

## Product Information

**Size:**

50ug

**Reactivity:**

Human, Mouse, Rat

**Source:**

Rabbit

**Isotype:**

IgG

**Applications:**

ELISA, WB, IHC

**Recommended dilutions:**

WB:1:500-1:2000, IHC:1:100-1:300

**Protein Background:**

**Gene ID:**

CREBBP

**Uniprot**

Q92793

**Synonyms:**

CREBBP; CBP; CREB-binding protein

**Immunogen:**

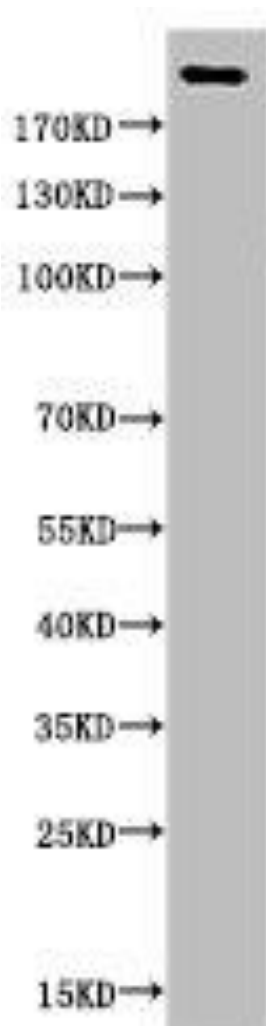
Synthesized peptide derived from human CBP around the acetylation site of K1535.

**Storage:**

Liquid in PBS containing 50% glycerol, 0.5% BSA and 0.02% sodium azide.

## Product Images

---



Western Blot analysis of various cells using Acetyl-CBP (K1535) Polyclonal Antibody.