

# ACTA1 Antibody



PACO00106

---

## Product Information

**Size:**

50ug

**Reactivity:**

Human, Mouse, Rat

**Source:**

Rabbit

**Isotype:**

IgG

**Applications:**

WB

**Recommended dilutions:**

**Protein Background:**

**Gene ID:**

ACTA1

**Uniprot**

P68133

**Synonyms:**

ACTA1; ACTA; Actin, alpha skeletal muscle; Alpha-actin-1

**Immunogen:**

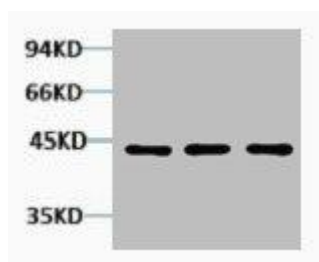
Synthetic peptide.

**Storage:**

PBS, pH 7.4, containing 0.02% sodium azide as Preservative and 50% Glycerol.

## Product Images

---



Western blot analysis of 1) HeLa, 2) 3T3, 3) Rat Kidney tissue, diluted at 1:2000.