

Phospho-Histone H2B (Ser32) Antibody



PACO00135

Product Information

Size:

50ug

Reactivity:

Human, Mouse, Rat

Source:

Rabbit

Isotype:

IgG

Applications:

ELISA, WB

Recommended dilutions:

WB:1:500-1:1000

Protein Background:**Gene ID:**

HIST1H2BA/HIST1H2BB/HIST1H2BC

Uniprot

Q96A08/P33778/P62807

Synonyms:

HIST1H2BA; TSH2B; Histone H2B type 1-A; Histone H2B, testis; Testis-specific histone H2B; HIST1H2BB; H2BFF; Histone H2B type 1-B; Histone H2B.1; Histone H2B. f; H2B/f; HIST1H2BC; H2BFL; HIST1H2BE; H2BFH; HIST1H2BF; H2BFG; HIST1H2BG; H2BFA; HIST1H2BI; H2BFK

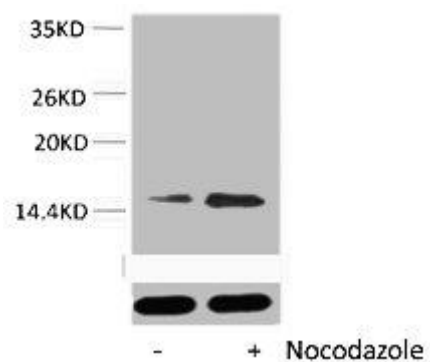
Immunogen:

Synthetic peptide.

Storage:

PBS, pH 7.4, containing 0.02% sodium azide as Preservative and 50% Glycerol.

Product Images



Western blot analysis of extracts from HeLa cells, untreated (-) or treated, 1:5000.