

Tri-Methyl-Histone H4 (Lys20) Antibody



PACO00138

Product Information

Size:

50ug

Reactivity:

Human, Mouse, Rat

Source:

Rabbit

Isotype:

IgG

Applications:

ELISA, WB

Recommended dilutions:

WB:1:500-1:1000

Protein Background:

Gene ID:

HIST1H4A

Uniprot

P62805

Synonyms:

HIST1H4A; H4/A; H4FA; HIST1H4B; H4/I; H4FI; HIST1H4C; H4/G; H4FG; HIST1H4D; H4/B; H4FB; HIST1H4E; H4/J; H4FJ; HIST1H4F; H4/C; H4FC; HIST1H4H; H4/H; H4FH; HIST1H4I; H4/M; H4FM; HIST1H4J; H4/E; H4FE; HIST1H4K; H4/D; H4FD; HIST1H4L; H4/K; H4FK; HIST2H4A; H4/

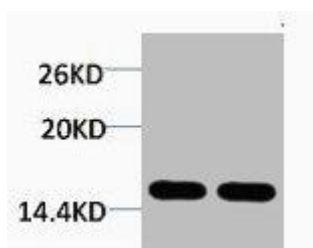
Immunogen:

Synthetic peptide.

Storage:

PBS, pH 7.4, containing 0.02% sodium azide as Preservative and 50% Glycerol.

Product Images



Western blot analysis of 1) HeLa, 2) 3T3, diluted at 1:2000.