

# Mono-Methyl-Histone H1 (Lys25) Antibody



PACO00144

---

## Product Information

**Size:**

50ug

**Reactivity:**

Human, Mouse, Rat

**Source:**

Rabbit

**Isotype:**

IgG

**Applications:**

ELISA, WB

**Recommended dilutions:**

WB:1:500-1:1000

**Protein Background:****Gene ID:**

HIST1H1A/HIST1H1C/HIST1H1D/HIST1H1E

**Uniprot**

Q02539/P16403/P16402/P10412

**Synonyms:**

HIST1H1A; H1F1; Histone H1.1; Histone H1a; HIST1H1C; H1F2; Histone H1.2; Histone H1c; Histone H1d; Histone H1s-1; HIST1H1D; H1F3; Histone H1.3; Histone H1c; Histone H1s-2; HIST1H1E; H1F4; Histone H1.4; Histone H1b; Histone H1s-4

**Immunogen:**

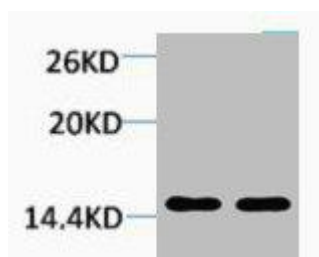
Synthetic peptide.

**Storage:**

PBS, pH 7.4, containing 0.02% sodium azide as Preservative and 50% Glycerol.

## Product Images

---



Western blot analysis of 1) HeLa, 2) 3T3, diluted at 1:2000.