

Di-Methyl-Histone H1 (Lys25) Antibody



PACO00145

Product Information

Size:

50ug

Reactivity:

Human, Mouse, Rat

Source:

Rabbit

Isotype:

IgG

Applications:

ELISA, WB

Recommended dilutions:

WB:1:500-1:1000

Protein Background:**Gene ID:**

HIST1H1A/HIST1H1C/HIST1H1D/HIST1H1E

Uniprot

Q02539/P16403/P16402/P10412

Synonyms:

HIST1H1A; H1F1; Histone H1.1; Histone H1a; HIST1H1C; H1F2; Histone H1.2; Histone H1c; Histone H1d; Histone H1s-1; HIST1H1D; H1F3; Histone H1.3; Histone H1c; Histone H1s-2; HIST1H1E; H1F4; Histone H1.4; Histone H1b; Histone H1s-4

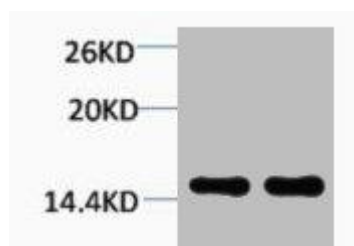
Immunogen:

Synthetic peptide.

Storage:

PBS, pH 7.4, containing 0.02% sodium azide as Preservative and 50% Glycerol.

Product Images



Western blot analysis of 1) HeLa, 2) 3T3, diluted at 1:2000.