

# Di-Methyl-Histone H2B (Lys43) Antibody



PACO00148

---

## Product Information

**Size:**

50ug

**Reactivity:**

Human, Mouse, Rat

**Source:**

Rabbit

**Isotype:**

IgG

**Applications:**

ELISA, WB

**Recommended dilutions:**

WB:1:500-1:1000

**Protein Background:****Gene ID:**

HIST1H2BA/HIST1H2BB/HIST1H2BC

**Uniprot**

Q96A08/P33778/P62807

**Synonyms:**

HIST1H2BA; TSH2B; Histone H2B type 1-A; Histone H2B, testis; Testis-specific histone H2B; HIST1H2BB; H2BFF; Histone H2B type 1-B; Histone H2B.1; Histone H2B. f; H2B/f; HIST1H2BC; H2BFL; HIST1H2BE; H2BFH; HIST1H2BF; H2BFG; HIST1H2BG; H2BFA; HIST1H2BI; H2BFK

**Immunogen:**

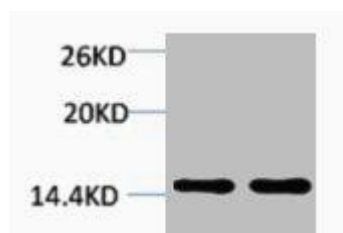
Synthetic peptide.

**Storage:**

PBS, pH 7.4, containing 0.02% sodium azide as Preservative and 50% Glycerol.

## Product Images

---



Western blot analysis of 1) HeLa, 2) 3T3, diluted at 1:2000.