

Acetyl-Histone H2A (Lys15) Antibody



PACO00157

Product Information

Size:

50ug

Reactivity:

Human, Mouse, Rat

Source:

Rabbit

Isotype:

IgG

Applications:

ELISA, WB

Recommended dilutions:

WB:1:500-1:1000

Protein Background:**Gene ID:**

HIST1H2AG/HIST2H2AA3/HIST3H2A

Uniprot

P0C0S8/Q6FI13/Q7L7L0

Synonyms:

HIST1H2AG; H2AFP; HIST1H2AI; H2AFC; HIST1H2AK; H2AFD; HIST1H2AL; H2AFI; HIST1H2AM; H2AFN; Histone H2A type 1; H2A.1; Histone H2A/p; HIST2H2AA3; H2AFO; HIST2H2AA; HIST2H2AA4; Histone H2A type 2-A; Histone H2A.2; Histone H2A/o; HIST3H2A; Histone H2A type 3

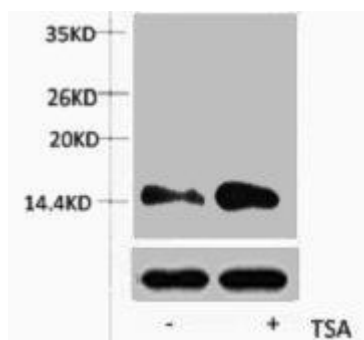
Immunogen:

Synthetic peptide.

Storage:

PBS, pH 7.4, containing 0.02% sodium azide as Preservative and 50% Glycerol.

Product Images



Western blot analysis of extracts from HeLa cells, untreated (-) or treated, 1:5000.