

Phospho-ATF2 (T73) Antibody



PACO00185

Product Information

Size:

50ug

Reactivity:

Human, Mouse, Rat

Source:

Rabbit

Isotype:

IgG

Applications:

ELISA, WB, IHC, IP

Recommended dilutions:

WB:1:500-1:2000, IHC:1:100-1:300, IP:2-5ug

Protein Background:**Gene ID:**

ATF2

Uniprot

P15336

Synonyms:

ATF2; CREB2; CREBP1; Cyclic AMP-dependent transcription factor ATF-2; cAMP-dependent transcription factor ATF-2; Activating transcription factor 2; Cyclic AMP-responsive element-binding protein 2; CREB-2; cAMP-responsive element-binding pro

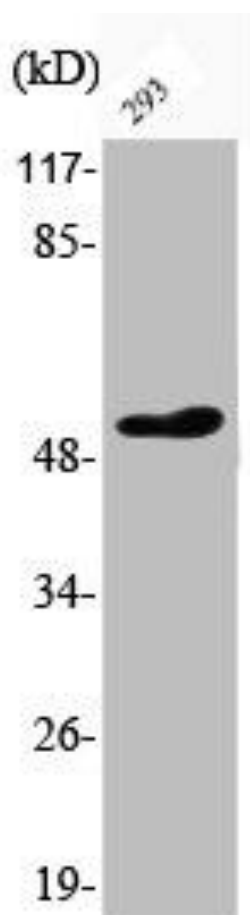
Immunogen:

Synthesized peptide derived from human ATF-2 around the phosphorylation site of T73.

Storage:

Liquid in PBS containing 50% glycerol, 0.5% BSA and 0.02% sodium azide.

Product Images



Western Blot analysis of 293 cells using Phospho-ATF-2 (T73) Polyclonal Antibody.