

# Phospho-BCR (Y177) Antibody



PACO00190

---

## Product Information

**Size:**

50ug

**Reactivity:**

Human, Mouse

**Source:**

Rabbit

**Isotype:**

IgG

**Applications:**

ELISA, WB

**Recommended dilutions:**

WB:1:500-1:2000

**Protein Background:****Gene ID:**

BCR

**Uniprot**

P11274

**Synonyms:**

BCR; BCR1; D22S11; Breakpoint cluster region protein; Renal carcinoma antigen NY-REN-26

**Immunogen:**

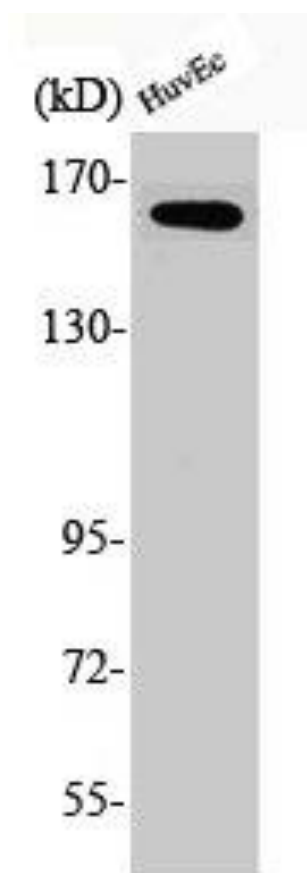
Synthesized peptide derived from human Bcr around the phosphorylation site of Y177.

**Storage:**

Liquid in PBS containing 50% glycerol, 0.5% BSA and 0.02% sodium azide.

## Product Images

---



Western Blot analysis of HuvEc cells using Phospho-Bcr (Y177) Polyclonal Antibody.