

Phospho-CDC25A (S75) Antibody



PACO00194

Product Information

Size:

50ug

Reactivity:

Human, Mouse, Rat

Source:

Rabbit

Isotype:

IgG

Applications:

ELISA, WB, IHC

Recommended dilutions:

WB:1:500-1:2000, IHC:1:100-1:300

Protein Background:**Gene ID:**

CDC25A

Uniprot

P30304

Synonyms:

CDC25A; M-phase inducer phosphatase 1; Dual specificity phosphatase Cdc25A

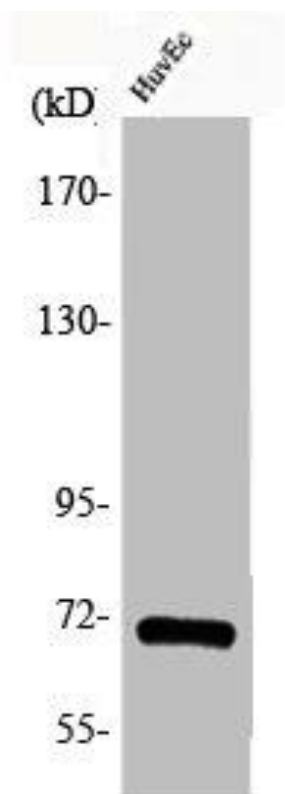
Immunogen:

Synthesized peptide derived from human Cdc25A around the phosphorylation site of S75.

Storage:

Liquid in PBS containing 50% glycerol, 0.5% BSA and 0.02% sodium azide.

Product Images



Western Blot analysis of HuvEc cells using Phospho-Cdc25A (S75) Polyclonal Antibody.