

# Phospho-DOK1 (Y362) Antibody



PACO00200

---

## Product Information

**Size:**

50ug

**Reactivity:**

Human, Mouse, Rat

**Source:**

Rabbit

**Isotype:**

IgG

**Applications:**

ELISA, WB, IF

**Recommended dilutions:**

WB:1:500-1:2000, IF:1:200-1:1000

**Protein Background:**

**Gene ID:**

DOK1

**Uniprot**

Q99704

**Synonyms:**

DOK1; Docking protein 1; Downstream of tyrosine kinase 1; p62(dok); pp62

**Immunogen:**

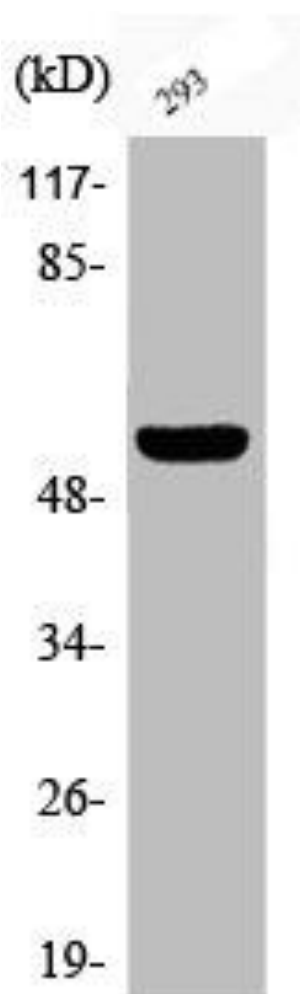
Synthesized peptide derived from human Dok-1 around the phosphorylation site of Y362.

**Storage:**

Liquid in PBS containing 50% glycerol, 0.5% BSA and 0.02% sodium azide.

## Product Images

---



Western Blot analysis of 293 cells using Phospho-Dok-1 (Y362) Polyclonal Antibody.