

# Phospho-DOK2 (Y299) Antibody



PACO00201

---

## Product Information

**Size:**

50ug

**Reactivity:**

Human, Mouse, Monkey

**Source:**

Rabbit

**Isotype:**

IgG

**Applications:**

ELISA, WB, IF

**Recommended dilutions:**

WB:1:500-1:2000, IF:1:200-1:1000

**Protein Background:**

**Gene ID:**

DOK2

**Uniprot**

O60496

**Synonyms:**

DOK2; Docking protein 2; Downstream of tyrosine kinase 2; p56(dok-2)

**Immunogen:**

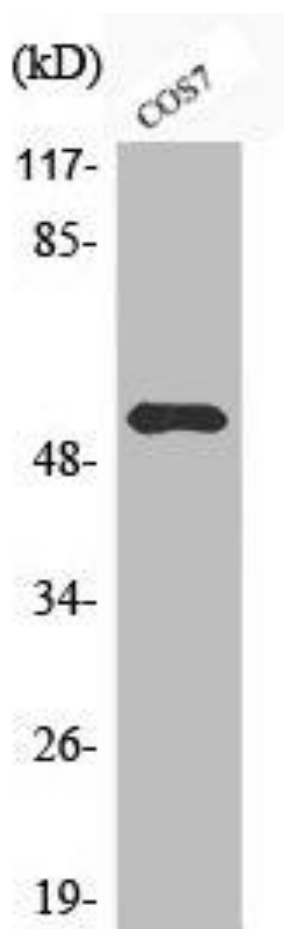
Synthesized peptide derived from human Dok-2 around the phosphorylation site of Y299.

**Storage:**

Liquid in PBS containing 50% glycerol, 0.5% BSA and 0.02% sodium azide.

## Product Images

---



Western Blot analysis of COS7 cells using Phospho-Dok-2 (Y299) Polyclonal Antibody.