

# Phospho-GATA1 (S310) Antibody



PACO00214

---

## Product Information

**Size:**

50ug

**Reactivity:**

Human, Mouse, Rat, Monkey

**Source:**

Rabbit

**Isotype:**

IgG

**Applications:**

ELISA, WB

**Recommended dilutions:**

WB:1:500-1:2000

**Protein Background:****Gene ID:**

GATA1

**Uniprot**

P15976

**Synonyms:**

GATA1; ERYF1; GF1; Erythroid transcription factor; Eryf1; GATA-binding factor 1; GATA-1; GF-1; NF-E1 DNA-binding protein

**Immunogen:**

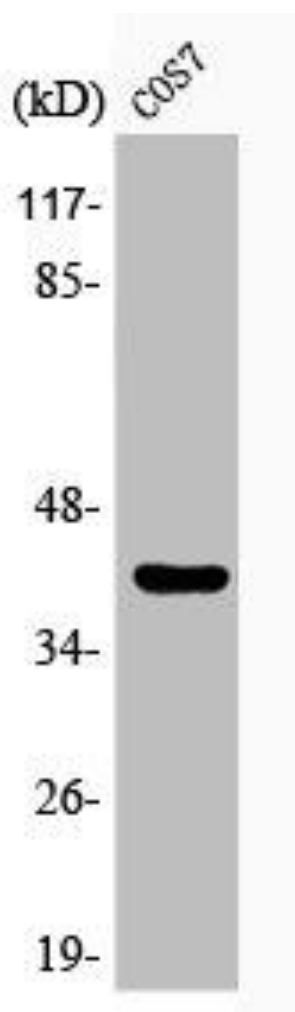
Synthesized peptide derived from human GATA-1 around the phosphorylation site of S310.

**Storage:**

Liquid in PBS containing 50% glycerol, 0.5% BSA and 0.02% sodium azide.

## Product Images

---



Western Blot analysis of COS7 cells using Phospho-GATA-1 (S310) Polyclonal Antibody.