

# Phospho-GSK3A (S21) Antibody



PACO00215

---

## Product Information

**Size:**

50ug

**Reactivity:**

Human, Mouse, Rat

**Source:**

Rabbit

**Isotype:**

IgG

**Applications:**

ELISA, WB, IHC, IP

**Recommended dilutions:**

WB:1:500-1:2000, IHC:1:100-1:300, IP:2-5ug

**Protein Background:****Gene ID:**

GSK3A

**Uniprot**

P49840

**Synonyms:**

GSK3A; Glycogen synthase kinase-3 alpha; GSK-3 alpha; Serine/threonine-protein kinase GSK3A

**Immunogen:**

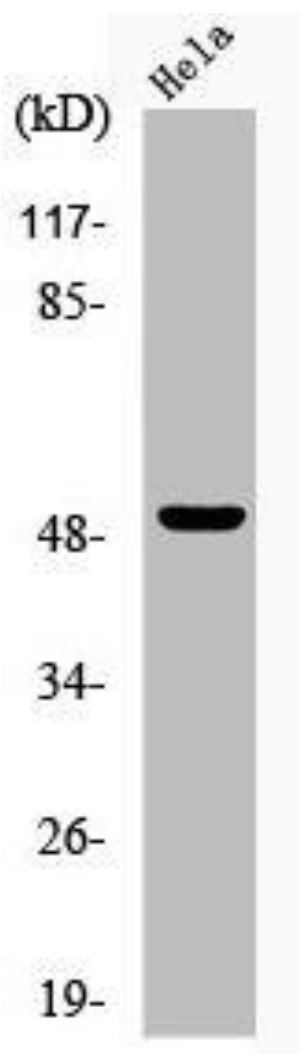
Synthesized peptide derived from human GSK3alpha around the phosphorylation site of S21.

**Storage:**

Liquid in PBS containing 50% glycerol, 0.5% BSA and 0.02% sodium azide.

## Product Images

---



Western Blot analysis of HeLa cells using Phospho-GSK3alpha (S21) Polyclonal Antibody.