

Phospho-HSPB1 (S15) Antibody



PACO00217

Product Information

Size:

50ug

Reactivity:

Human, Monkey

Source:

Rabbit

Isotype:

IgG

Applications:

ELISA, WB, IHC

Recommended dilutions:

WB:1:500-1:2000, IHC:1:100-1:300

Protein Background:**Gene ID:**

HSPB1

Uniprot

P04792

Synonyms:

HSPB1; HSP27; HSP28; Heat shock protein beta-1; HspB1; 28 kDa heat shock protein; Estrogen-regulated 24 kDa protein; Heat shock 27 kDa protein; HSP 27; Stress-responsive protein 27; SRP27

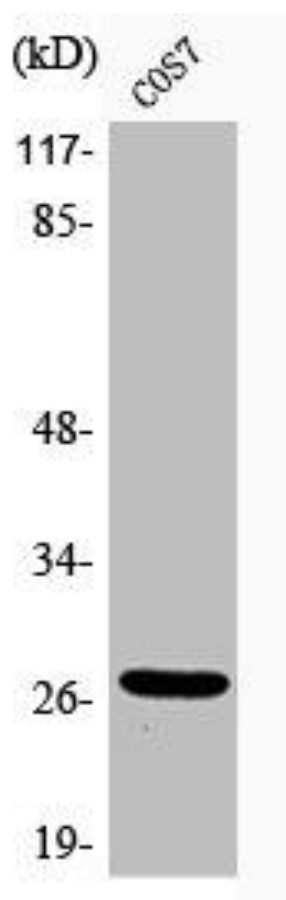
Immunogen:

Synthesized peptide derived from human HSP27 around the phosphorylation site of S15.

Storage:

Liquid in PBS containing 50% glycerol, 0.5% BSA and 0.02% sodium azide.

Product Images



Western Blot analysis of COS7 cells using Phospho-HSP27 (S15) Polyclonal Antibody.