

# Phospho-ICAM1 (Y512) Antibody



PACO00220

---

## Product Information

**Size:**

50ug

**Reactivity:**

Human

**Source:**

Rabbit

**Isotype:**

IgG

**Applications:**

ELISA, WB

**Recommended dilutions:**

WB:1:500-1:2000

**Protein Background:**

**Gene ID:**

ICAM1

**Uniprot**

P05362

**Synonyms:**

ICAM1; Intercellular adhesion molecule 1; ICAM-1; Major group rhinovirus receptor; CD antigen CD54

**Immunogen:**

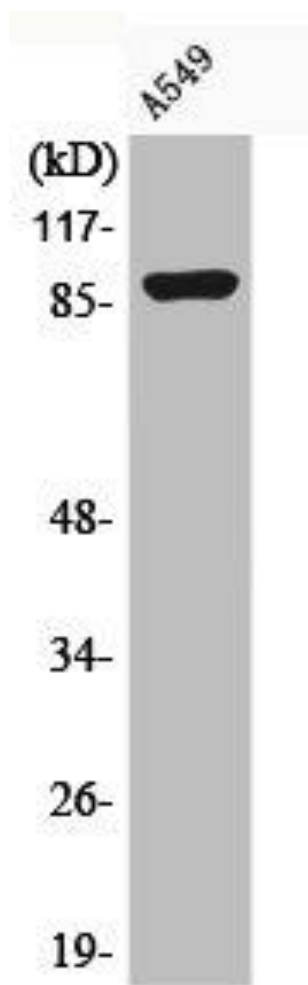
Synthesized peptide derived from human ICAM-1 around the phosphorylation site of Y512.

**Storage:**

Liquid in PBS containing 50% glycerol, 0.5% BSA and 0.02% sodium azide.

## Product Images

---



Western Blot analysis of A549(85) cells using Phospho-ICAM-1 (Y512) Polyclonal Antibody.