

Phospho-JUNB (S259) Antibody



PACO00228

Product Information

Size:

50ug

Reactivity:

Human, Mouse, Rat

Source:

Rabbit

Isotype:

IgG

Applications:

ELISA, WB, IHC, IP

Recommended dilutions:

WB:1:500-1:2000, IHC:1:100-1:300, IP:2-5ug

Protein Background:**Gene ID:**

JUNB

Uniprot

P17275

Synonyms:

JUNB; Transcription factor jun-B

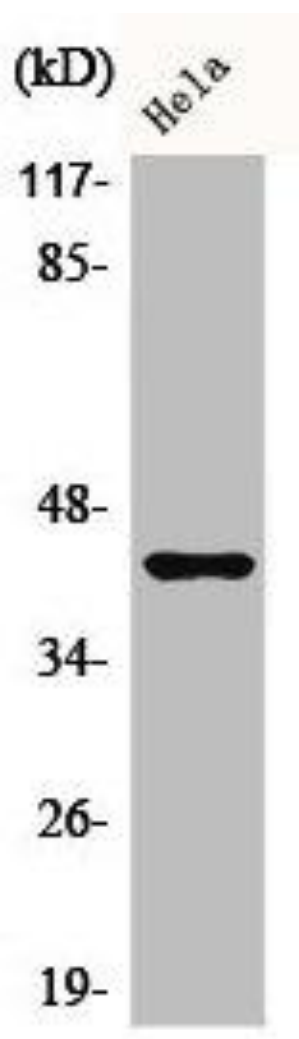
Immunogen:

Synthesized peptide derived from human Jun B around the phosphorylation site of S259.

Storage:

Liquid in PBS containing 50% glycerol, 0.5% BSA and 0.02% sodium azide.

Product Images



Western Blot analysis of HeLa cells using Phospho-Jun B (S259) Polyclonal Antibody.