

Phospho-ERBB2 (Y877) Antibody



PACO00236

Product Information

Size:

50ug

Reactivity:

Human, Mouse, Rat

Source:

Rabbit

Isotype:

IgG

Applications:

ELISA, WB, IHC, IP

Recommended dilutions:

WB:1:500-1:2000, IHC:1:100-1:300, IP:2-5ug

Protein Background:**Gene ID:**

ERBB2

Uniprot

P04626

Synonyms:

ERBB2; HER2; MLN19; NEU; NGL; Receptor tyrosine-protein kinase erbB-2; Metastatic lymph node gene 19 protein; MLN 19; Proto-oncogene Neu; Proto-oncogene c-ErbB-2; Tyrosine kinase-type cell surface receptor HER2; p185erbB2; CD antigen CD340

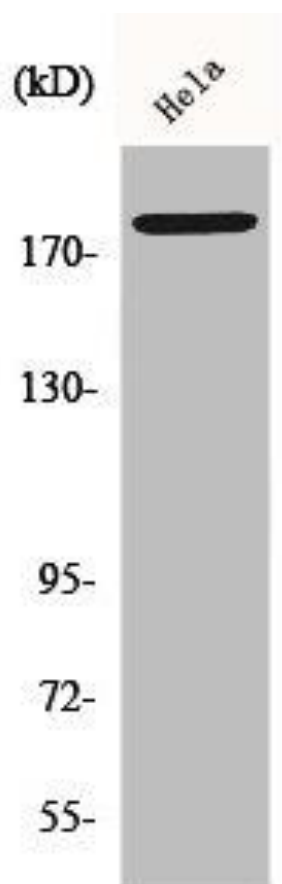
Immunogen:

Synthesized peptide derived from human Neu around the phosphorylation site of Y877.

Storage:

Liquid in PBS containing 50% glycerol, 0.5% BSA and 0.02% sodium azide.

Product Images



Western Blot analysis of HepG2 cells using Phospho-Neu (Y877) Polyclonal Antibody.