

# Phospho-RELA (S468) Antibody



PACO00240

---

## Product Information

**Size:**

50ug

**Reactivity:**

Human, Mouse, Rat

**Source:**

Rabbit

**Isotype:**

IgG

**Applications:**

ELISA, WB, IHC, IP

**Recommended dilutions:**

WB:1:500-1:2000, IHC:1:100-1:300, IP:2-5ug

**Protein Background:****Gene ID:**

RELA

**Uniprot**

Q04206

**Synonyms:**

RELA; NFKB3; Transcription factor p65; Nuclear factor NF-kappa-B p65 subunit; Nuclear factor of kappa light polypeptide gene enhancer in B-cells 3

**Immunogen:**

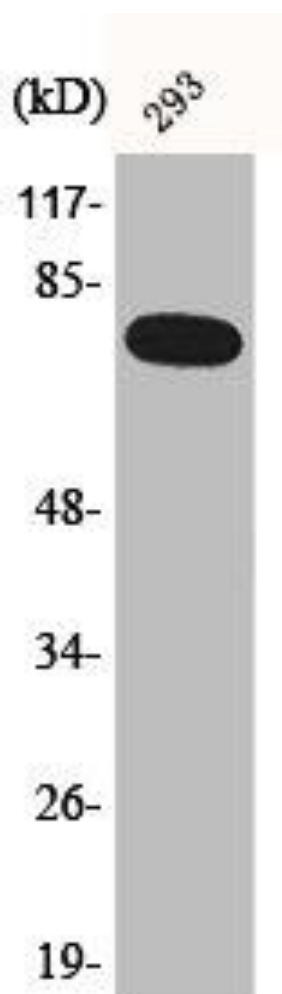
Synthesized peptide derived from human NFKappaB-p65 around the phosphorylation site of S468.

**Storage:**

Liquid in PBS containing 50% glycerol, 0.5% BSA and 0.02% sodium azide.

## Product Images

---



Western Blot analysis of 293 cells using Phospho-NFKappaB-p65 (S468) Polyclonal Antibody.