

Phospho-RELA (T254) Antibody



PACO00243

Product Information

Size:

50ug

Reactivity:

Human, Mouse, Rat

Source:

Rabbit

Isotype:

IgG

Applications:

ELISA, WB, IHC, IP

Recommended dilutions:

WB:1:500-1:2000, IHC:1:100-1:300, IP:2-5ug

Protein Background:**Gene ID:**

RELA

Uniprot

Q04206

Synonyms:

RELA; NFKB3; Transcription factor p65; Nuclear factor NF-kappa-B p65 subunit; Nuclear factor of kappa light polypeptide gene enhancer in B-cells 3

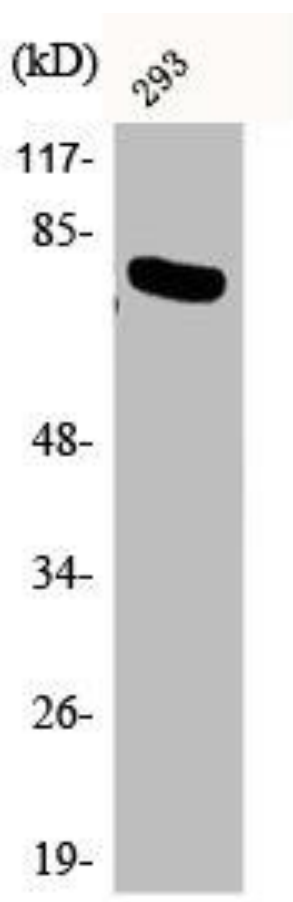
Immunogen:

Synthesized peptide derived from human NFKappaB-p65 around the phosphorylation site of T254.

Storage:

Liquid in PBS containing 50% glycerol, 0.5% BSA and 0.02% sodium azide.

Product Images



Western Blot analysis of 293 cells using Phospho-NFKappaB-p65 (T254) Polyclonal Antibody.