

# Phospho-STMN1 (S38) Antibody



PACO00246

---

## Product Information

**Size:**

50ug

**Reactivity:**

Human, Mouse, Rat, Monkey

**Source:**

Rabbit

**Isotype:**

IgG

**Applications:**

ELISA, WB, IHC

**Recommended dilutions:**

WB:1:500-1:2000, IHC:1:100-1:300

**Protein Background:****Gene ID:**

STMN1

**Uniprot**

P16949

**Synonyms:**

STMN1; C1orf215; LAP18; OP18; Stathmin; Leukemia-associated phosphoprotein p18; Metablastin; Oncoprotein 18; Op18; Phosphoprotein p19; pp19; ProsoLin; Protein Pr22; pp17

**Immunogen:**

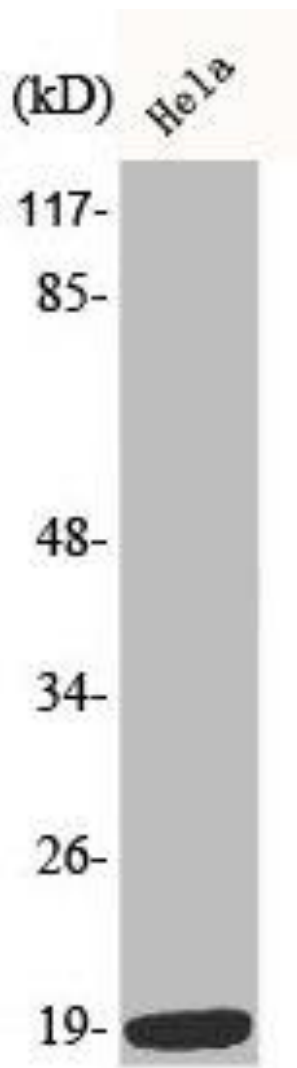
Synthesized peptide derived from human Op18 around the phosphorylation site of S38.

**Storage:**

Liquid in PBS containing 50% glycerol, 0.5% BSA and 0.02% sodium azide.

## Product Images

---



Western Blot analysis of HeLa cells using Phospho-Op18 (S38) Polyclonal Antibody.