

Phospho-TP53 (S6) Antibody



PACO00255

Product Information

Size:

50ug

Reactivity:

Human, Monkey

Source:

Rabbit

Isotype:

IgG

Applications:

ELISA, WB, IHC, IP

Recommended dilutions:

WB:1:500-1:2000, IHC:1:100-1:300, IP:2-5ug

Protein Background:

Gene ID:

TP53

Uniprot

P04637

Synonyms:

TP53; P53; Cellular tumor antigen p53; Antigen NY-CO-13; Phosphoprotein p53; Tumor suppressor p53

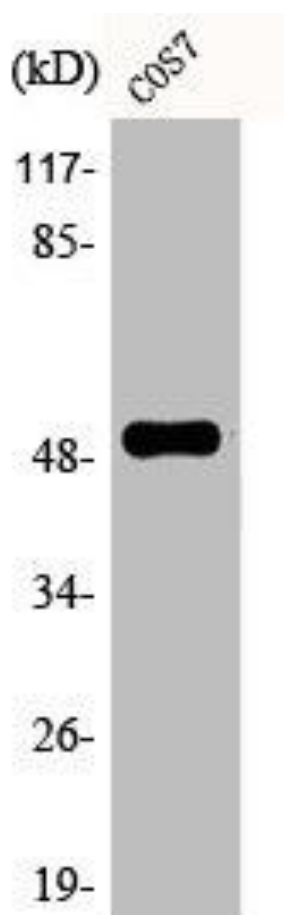
Immunogen:

Synthesized peptide derived from human p53 around the phosphorylation site of S6.

Storage:

Liquid in PBS containing 50% glycerol, 0.5% BSA and 0.02% sodium azide.

Product Images



Western Blot analysis of COS7 cells using Phospho-p53 (S6) Polyclonal Antibody.