

Phospho-STAT6 (Y641) Antibody



PACO00270

Product Information

Size:

50ug

Reactivity:

Human, Mouse, Rat

Source:

Rabbit

Isotype:

IgG

Applications:

ELISA, WB, IHC

Recommended dilutions:

WB:1:500-1:2000, IHC:1:100-1:300

Protein Background:

Gene ID:

STAT6

Uniprot

P42226

Synonyms:

STAT6; Signal transducer and activator of transcription 6; IL-4 Stat

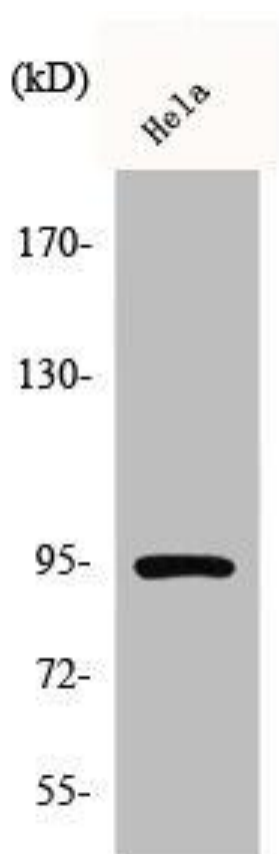
Immunogen:

Synthesized peptide derived from human Stat6 around the phosphorylation site of Y641.

Storage:

Liquid in PBS containing 50% glycerol, 0.5% BSA and 0.02% sodium azide.

Product Images



Western Blot analysis of HeLa cells using Phospho-Stat6 (Y641) Polyclonal Antibody.