

Phospho-CCR5 (S349) Antibody



PACO00278

Product Information

Size:

50ug

Reactivity:

Human

Source:

Rabbit

Isotype:

IgG

Applications:

ELISA, WB

Recommended dilutions:

WB:1:500-1:2000

Protein Background:**Gene ID:**

CCR5

Uniprot

P51681

Synonyms:

CCR5; CMKBR5; C-C chemokine receptor type 5; C-C CKR-5; CC-CKR-5; CCR-5; CCR5; CHEMR13; HIV-1 fusion coreceptor; CD antigen CD195

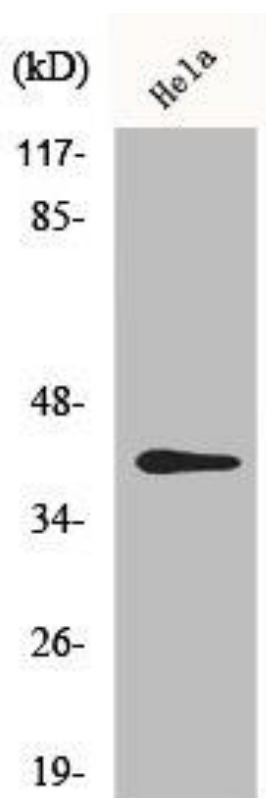
Immunogen:

Synthesized peptide derived from human CKR-5 around the phosphorylation site of S349.

Storage:

Liquid in PBS containing 50% glycerol, 0.5% BSA and 0.02% sodium azide.

Product Images



Western Blot analysis of HeLa cells using Phospho-CKR-5 (S349) Polyclonal Antibody.