

Phospho-CASP8 (Y380) Antibody



PACO00281

Product Information

Size:

50ug

Reactivity:

Human

Source:

Rabbit

Isotype:

IgG

Applications:

ELISA, WB

Recommended dilutions:

WB:1:500-1:2000

Protein Background:**Gene ID:**

CASP8

Uniprot

Q14790

Synonyms:

CASP8; MCH5; Caspase-8; CASP-8; Apoptotic cysteine protease; Apoptotic protease Mch-5; CAP4; FADD-homologous ICE/ced-3-like protease; FADD-like ICE; FLICE; ICE-like apoptotic protease 5; MORT1-associated ced-3 homolog; MACH

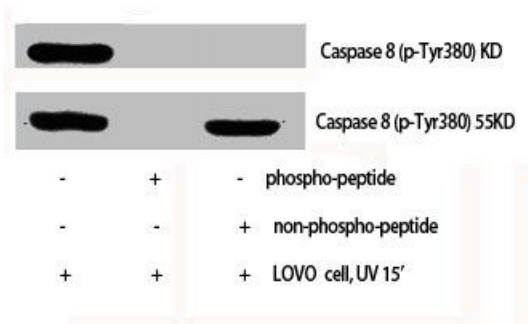
Immunogen:

Synthesized peptide derived from human Caspase-8 around the phosphorylation site of Y380.

Storage:

Liquid in PBS containing 50% glycerol, 0.5% BSA and 0.02% sodium azide.

Product Images



Western Blot analysis of LOVO cells using Phospho-Caspase-8 (Y380) Polyclonal Antibody.