

# Phospho-FOS (S32) Antibody



PACO00282

---

## Product Information

**Size:**

50ug

**Reactivity:**

Human, Mouse, Rat

**Source:**

Rabbit

**Isotype:**

IgG

**Applications:**

ELISA, WB

**Recommended dilutions:**

WB:1:500-1:2000

**Protein Background:****Gene ID:**

FOS

**Uniprot**

P01100

**Synonyms:**

FOS; G0S7; Proto-oncogene c-Fos; Cellular oncogene fos; G0/G1 switch regulatory protein 7

**Immunogen:**

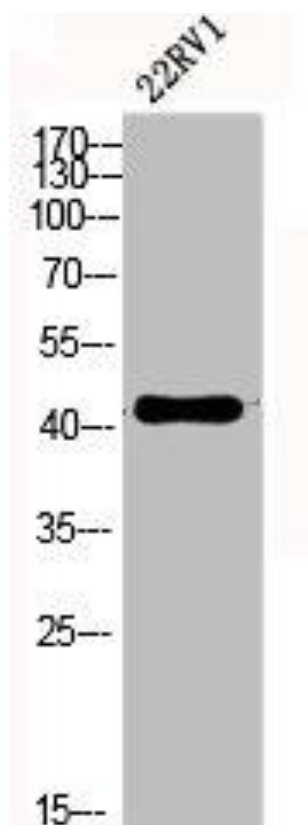
Synthesized peptide derived from human c-Fos around the phosphorylation site of S32.

**Storage:**

Liquid in PBS containing 50% glycerol, 0.5% BSA and 0.02% sodium azide.

## Product Images

---



Western Blot analysis of 22RV1 cells using Phospho-c-Fos (S32) Polyclonal Antibody.