

# Phospho-RPS6KA5 (S376) Antibody



PACO00284

---

## Product Information

**Size:**

50ug

**Reactivity:**

Human, Mouse

**Source:**

Rabbit

**Isotype:**

IgG

**Applications:**

ELISA, WB, IF

**Recommended dilutions:**

WB:1:500-1:2000, IF:1:200-1:1000

**Protein Background:****Gene ID:**

RPS6KA5

**Uniprot**

O75582

**Synonyms:**

RPS6KA5; MSK1; Ribosomal protein S6 kinase alpha-5; S6K-alpha-5; 90 kDa ribosomal protein S6 kinase 5; Nuclear mitogen- and stress-activated protein kinase 1; RSK-like protein kinase; RSKL

**Immunogen:**

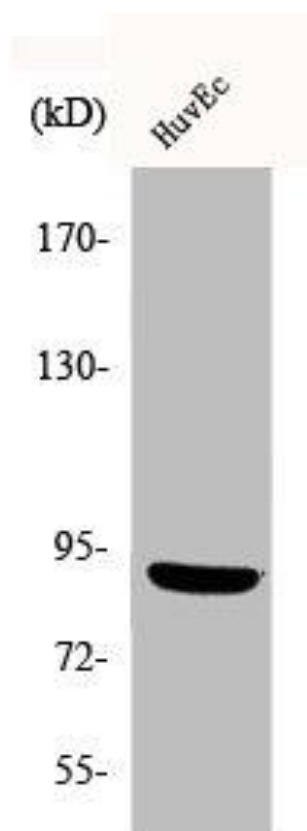
Synthesized peptide derived from human MSK1 around the phosphorylation site of S376.

**Storage:**

Liquid in PBS containing 50% glycerol, 0.5% BSA and 0.02% sodium azide.

## Product Images

---



Western Blot analysis of HuvEc cells using Phospho-MSK1 (S376) Polyclonal Antibody.