

# Phospho-ITGB3 (Y785) Antibody



PACO00286

---

## Product Information

**Size:**

50ug

**Reactivity:**

Human, Mouse, Rat

**Source:**

Rabbit

**Isotype:**

IgG

**Applications:**

ELISA, WB

**Recommended dilutions:**

WB:1:500-1:2000

**Protein Background:****Gene ID:**

ITGB3

**Uniprot**

P05106

**Synonyms:**

ITGB3; GP3A; Integrin beta-3; Platelet membrane glycoprotein IIIa; GPIIIa; CD antigen CD61

**Immunogen:**

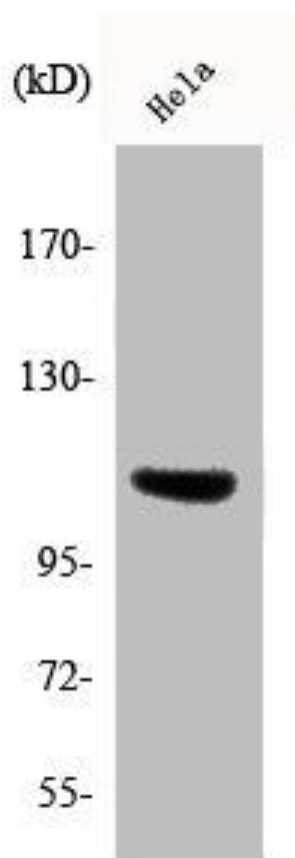
Synthesized peptide derived from human Integrin Beta3 around the phosphorylation site of Y785.

**Storage:**

Liquid in PBS containing 50% glycerol, 0.5% BSA and 0.02% sodium azide.

## Product Images

---



Western Blot analysis of HepG2 cells using Phospho-Integrin Beta3 (Y785) Polyclonal Antibody.