

Phospho-GABRB1 (S434) Antibody



PACO00289

Product Information

Size:

50ug

Reactivity:

Human, Mouse, Rat, Monkey

Source:

Rabbit

Isotype:

IgG

Applications:

ELISA, WB, IHC

Recommended dilutions:

WB:1:500-1:2000, IHC:1:100-1:300

Protein Background:**Gene ID:**

GABRB1

Uniprot

P18505

Synonyms:

GABRB1; Gamma-aminobutyric acid receptor subunit beta-1; GABA(A) receptor subunit beta-1

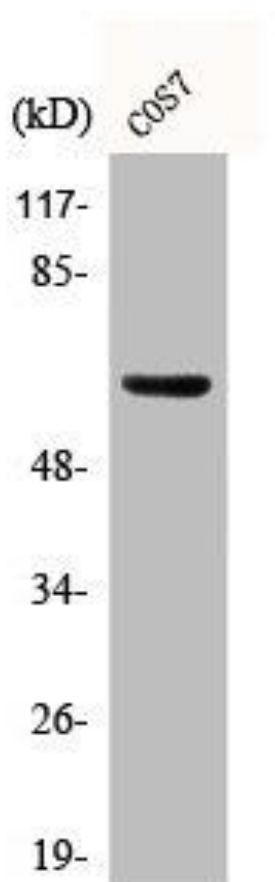
Immunogen:

Synthesized peptide derived from human GABAA RBeta1 around the phosphorylation site of S434.

Storage:

Liquid in PBS containing 50% glycerol, 0.5% BSA and 0.02% sodium azide.

Product Images



Western Blot analysis of COS7 cells using Phospho-GABAA RBeta1 (S434) Polyclonal Antibody.